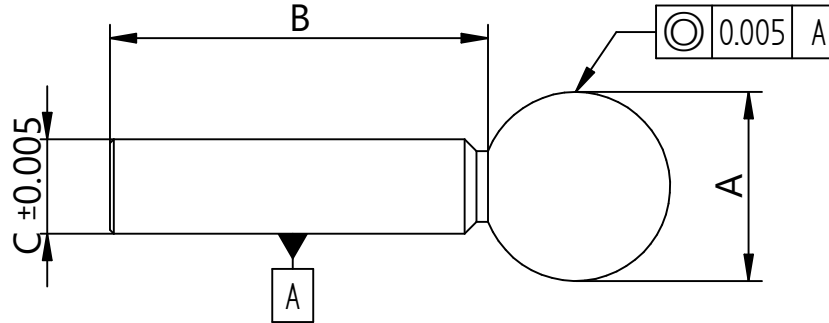


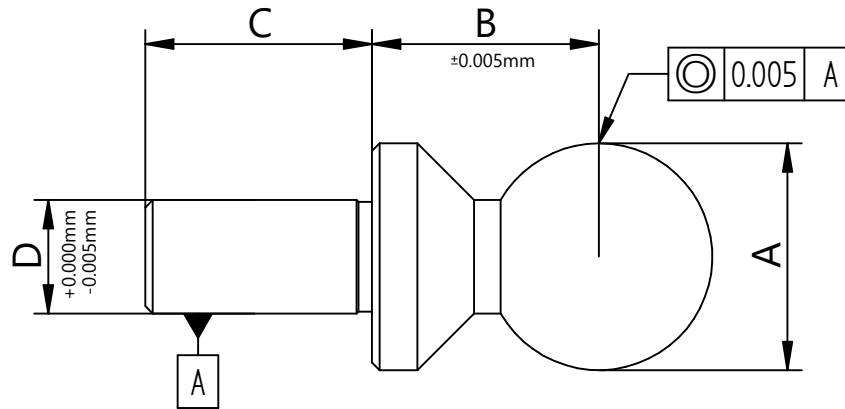


TN United Kingdom Type 1 Tooling Balls



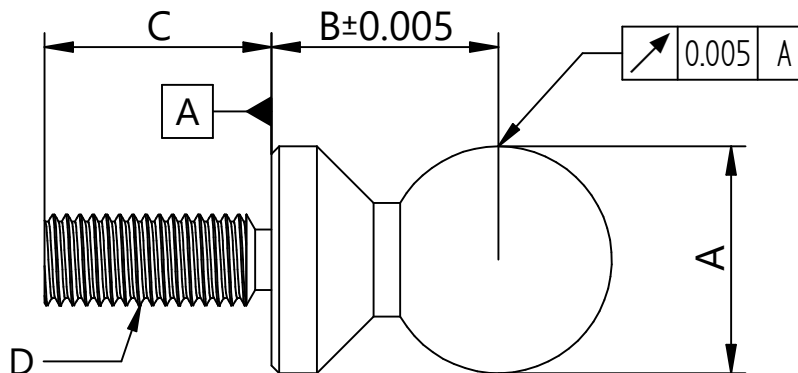
Part Number	A	B	C
Type 1 - 6.00mm	6.00	12.00	3.00
Type 1 - 1/4"	0.2500"	0.5000"	0.1250"
Type 1 - 8.00mm	8.00	16.00	4.00
Type 1 - 3/8"	0.3750"	0.7500"	0.1875"
Type 1 - 10.00mm	10.00	20.00	5.00
Type 1 - 12.00mm	12.00	24.00	6.00
Type 1 - 1/2"	0.5000"	1.0000"	0.2500"
Type 1 - 15.00mm	15.00	30.00	7.50
Type 1 - 5/8"	0.6250"	1.2500"	0.3125"
Type 1 - 3/4"	0.7500"	1.5000"	0.3750"
Type 1 - 20.00mm	20.00	40.00	10.00
Type 1 - 7/8"	0.8750"	1.7500"	0.4375"
Type 1 - 25.00mm	25.00	50.00	12.50
Type 1 - 1"	1.0000"	2.0000"	0.5000"
Type 1 - 30.00mm	30.00	50.00	15.00

TN United Kingdom Type 2 Tooling Balls



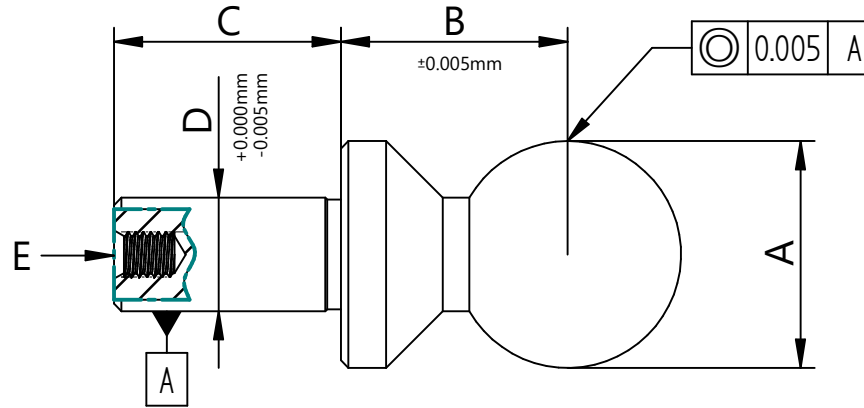
Part Number	A	B	C	D
Type 2 - 6.00mm	6.00	6.00	6.00	3.00
Type 2 - 1/4"	0.2500"	0.2500"	0.2500"	0.1250"
Type 2 - 8.00mm	8.00	8.00	8.00	4.00
Type 2 - 3/8"	0.3750"	0.3750"	0.3750"	0.1875"
Type 2 - 10.00mm	10.00	10.00	10.00	5.00
Type 2 - 12.00mm	12.00	12.00	12.00	6.00
Type 2 - 1/2"	0.5000"	0.5000"	0.5000"	0.2500"
Type 2 - 15.00mm	15.00	15.00	15.00	7.50
Type 2 - 5/8"	0.6250"	0.6250"	0.6250"	0.3125"
Type 2 - 3/4"	0.7500"	0.7500"	0.7500"	0.3750"
Type 2 - 20.00mm	20.00	20.00	20.00	10.00
Type 2 - 7/8"	0.8750"	0.8750"	0.8750"	0.4375"
Type 2 - 25.00mm	25.00	25.00	25.00	12.00
Type 2 - 1"	1.0000"	1.0000"	1.0000"	0.5000"
Type 2 - 30.00mm	30.00	30.00	30.00	15.00

TN United Kingdom Type 3 Tooling Balls



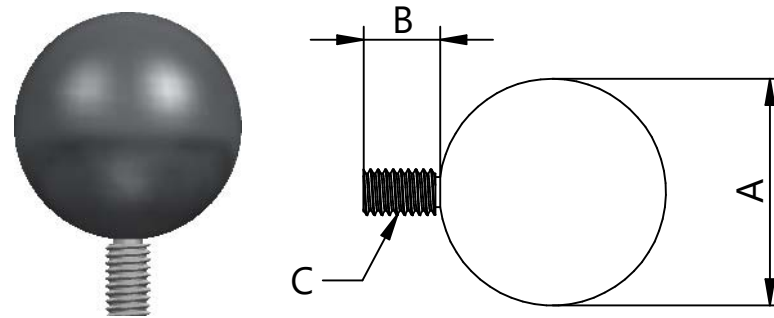
Part Number	A	B	C	D
Type 3 - 6.00mm	6.00	6.00	6.00	M3
Type 3 - 1/4"	0.2500"	0.2500"	0.2500"	6-32 UNC
Type 3 - 8.00mm	8.00	8.00	8.00	M4
Type 3 - 3/8"	0.3750"	0.3750"	0.3750"	10-24 UNC
Type 3 - 10.00mm	10.00	10.00	10.00	M5
Type 3 - 12.00mm	12.00	12.00	12.00	M6
Type 3 - 1/2"	0.5000"	0.5000"	0.5000"	1/4 UNF
Type 3 - 15.00mm	15.00	15.00	15.00	M8
Type 3 - 5/8"	0.6250"	0.6250"	0.6250"	5/16 UNF
Type 3 - 3/4"	0.7500"	0.7500"	0.7500"	3/8 UNF
Type 3 - 20.00mm	20.00	20.00	20.00	M10
Type 3 - 7/8"	0.8750"	0.8750"	0.8750"	7/16 UNF
Type 3 - 25.00mm	25.00	25.00	25.00	M12
Type 3 - 1"	1.0000"	1.0000"	1.0000"	1/2 UNF
Type 3 - 30.00mm	30.00	30.00	30.00	M12

TN United Kingdom Type 4 Tooling Balls



Part Number	A	B	C	D	E
Type 4 - 6.00mm	6.00	6.00	6.00	3.00	M2
Type 4 - 1/4"	0.2500"	0.2500"	0.2500"	0.1250"	2-56 UNC
Type 4 - 8.00mm	8.00	8.00	8.00	4.00	M2
Type 4 - 3/8"	0.3750"	0.3750"	0.3750"	0.1875"	4-40 UNC
Type 4 - 10.00mm	10.00	10.00	10.00	5.00	M2
Type 4 - 12.00mm	12.00	12.00	12.00	6.00	M3
Type 4 - 1/2"	0.5000"	0.5000"	0.5000"	0.2500"	6-32 UNC
Type 4 - 15.00mm	15.00	15.00	15.00	7.50	M3
Type 4 - 5/8"	0.6250"	0.6250"	0.6250"	0.3125"	10-24 UNC
Type 4 - 3/4"	0.7500"	0.7500"	0.7500"	0.3750"	10-24 UNC
Type 4 - 20.00mm	20.00	20.00	20.00	10.00	M6
Type 4 - 7/8"	0.8750"	0.8750"	0.8750"	0.4375"	10-24 UNC
Type 4 - 25.00mm	25.00	25.00	25.00	12.00	M6
Type 4 - 1"	1.0000"	1.0000"	1.0000"	0.5000"	10-24 UNC
Type 4 - 30.00mm	30.00	30.00	30.00	15.00	M6

TN United Kingdom Type 5 Tooling Balls



Part Number	A	B	C
Type 5 - 6.00mm	6.00	8.00	M2.5
Type 5 - 1/4"	0.2500"	0.3120"	4-40 UNC
Type 5 - 8.00mm	8.00	8.00	M2.5
Type 5 - 3/8"	0.3750"	0.3120"	4-40 UNC
Type 5 - 10.00mm	10.00	8.00	M2.5
Type 5 - 12.00mm	12.00	8.00	M2.5
Type 5 - 1/2"	0.5000"	0.3120"	4-40 UNC
Type 5 - 15.00mm	15.00	10.00	M4
Type 5 - 5/8"	0.6250"	0.3750"	6-32 UNC
Type 5 - 3/4"	0.7500"	0.3750"	6-32 UNC
Type 5 - 20.00mm	20.00	10.00	M4
Type 5 - 7/8"	0.8750"	0.3750"	10-32 UNF
Type 5 - 25.00mm	25.00	10.00	M6
Type 5 - 1"	1.0000"	0.3750"	10-32 UNF
Type 5 - 30.00mm	30.00	10.00	M6