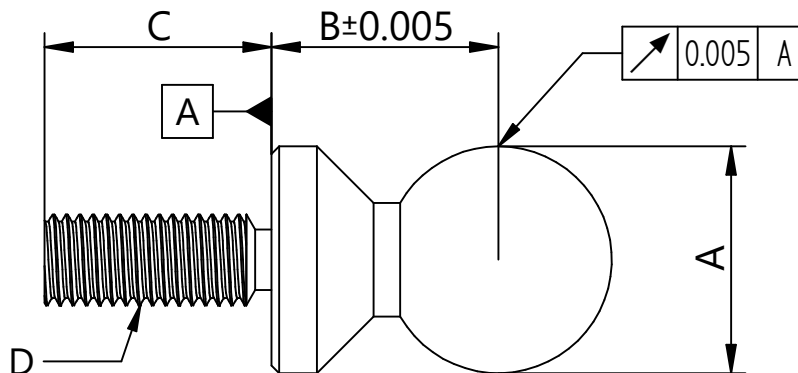


# TN United Kingdom Type 3 Tooling Balls



Part Number	A	B	C	D
Type 3 - 6.00mm	6.00	6.00	6.00	M3
Type 3 - 1/4"	0.2500"	0.2500"	0.2500"	6-32 UNC
Type 3 - 8.00mm	8.00	8.00	8.00	M4
Type 3 - 3/8"	0.3750"	0.3750"	0.3750"	10-24 UNC
Type 3 - 10.00mm	10.00	10.00	10.00	M5
Type 3 - 12.00mm	12.00	12.00	12.00	M6
Type 3 - 1/2"	0.5000"	0.5000"	0.5000"	1/4 UNF
Type 3 - 15.00mm	15.00	15.00	15.00	M8
Type 3 - 5/8"	0.6250"	0.6250"	0.6250"	5/16 UNF
Type 3 - 3/4"	0.7500"	0.7500"	0.7500"	3/8 UNF
Type 3 - 20.00mm	20.00	20.00	20.00	M10
Type 3 - 7/8"	0.8750"	0.8750"	0.8750"	7/16 UNF
Type 3 - 25.00mm	25.00	25.00	25.00	M12
Type 3 - 1"	1.0000"	1.0000"	1.0000"	1/2 UNF
Type 3 - 30.00mm	30.00	30.00	30.00	M12