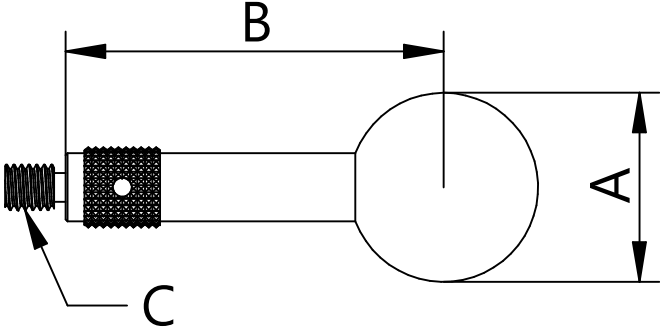


TN United Kingdom CMM Reference Balls



Part Number	A	B	C
CMMREF - 3/8"	0.3750"	2"	M6 or 1/4 UNF
CMMREF - 10.00mm	10.00	50.00	M6
CMMREF - 1/2"	0.5000"	2"	M6 or 1/4 UNF
CMMREF - 15.00mm	15.00	50.00	M6
CMMREF - 5/8"	0.6250"	2"	M6 or 1/4 UNF
CMMREF - 3/4"	0.7500"	2"	M6 or 1/4 UNF
CMMREF - 20.00mm	20.00	50.00	M6
CMMREF - 7/8"	0.8750"	2"	M6 or 1/4 UNF
CMMREF - 25.00mm	25.00	50.00	M6
CMMREF- 1"	1.0000"	2"	M6 or 1/4 UNF
CMMREF - 50.00mm	50.00	100.00	M10
CMMREF - 2"	2"	4"	M10 or 3/8 UNF